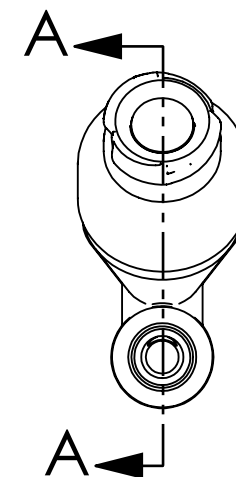
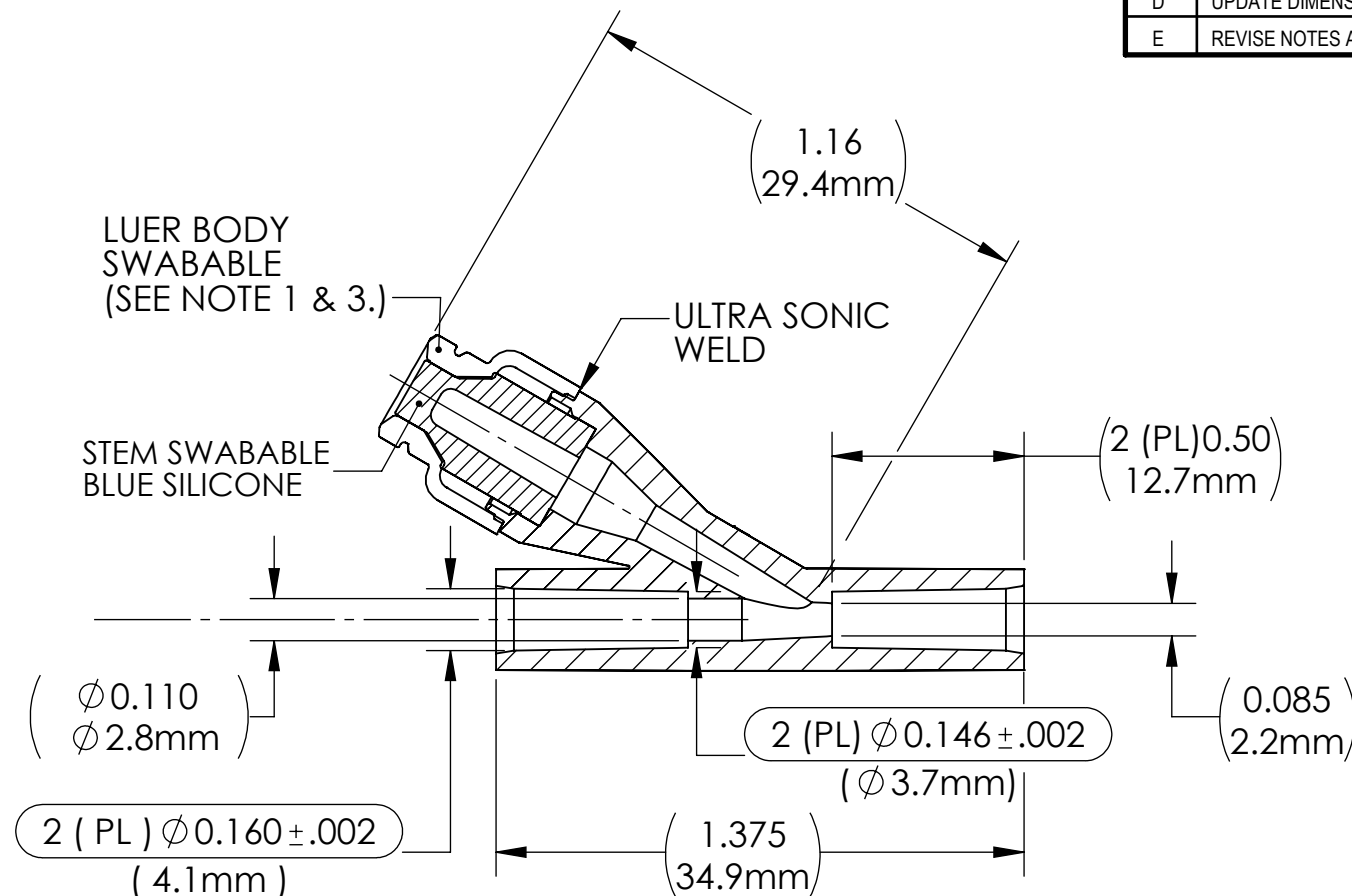
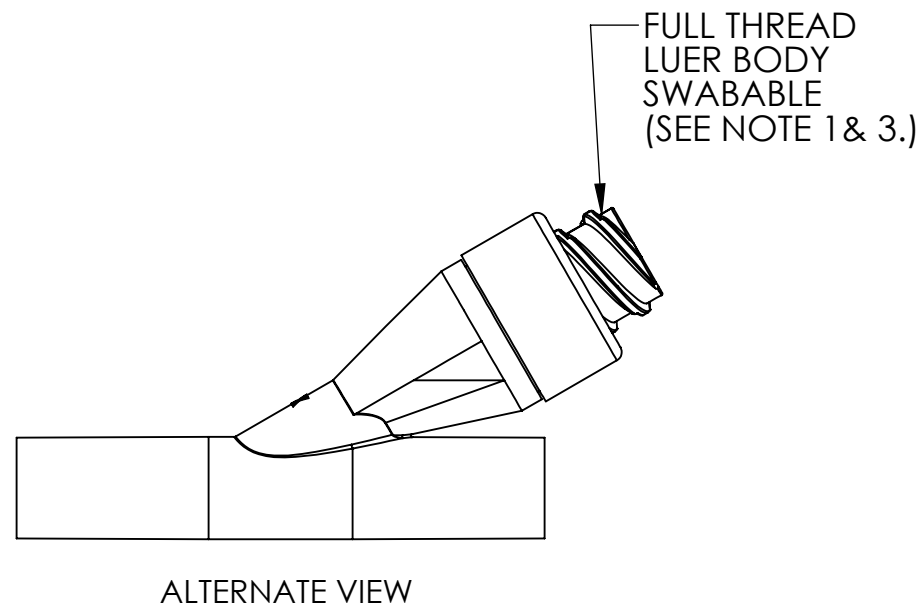


REV	DESCRIPTION (ECO)	DATE	APPROVED
D	UPDATE DIMENSION FOR TUBING BORE, INCLUDE CHAMFER ECO 11352	10/19/21	SR
E	REVISE NOTES ADD SUFFIX "50", ADD "FT" FULL THREAD. ECO 12920	02/04/25	DK



NOTES:

1. 1st SUFFIX "X" INDICATES MATERIAL & COLOR:  
24 - CLEAR POLYCARBONATE  
50 - CLEAR COPOLYESTER  
  
2nd SUFFIX "X" INDICATES THREAD CONFIGURATION.  
NONE - STANDARD THREAD  
FT - FULL THREAD
2. CRITICAL DIMENSIONS ARE CIRCLED AND SUBJECT TO INSPECTION.  
DIMENSIONS IN PARENTHESES ARE REFERENCE ONLY.  
ALL DIMENSIONS ARE IN INCHES WITH THE NOMINAL DIMENSIONS IN METRIC BELOW.
3. LUER COMPATIBLE WITH ISO594-2, AND ISO80369-7.

VALVE SPECIFICATION:


BACK PRESSURE: > 30 PSI, REF. (2.1 BAR). ( 40 PSI NOMINAL ) .  
 BIOCOMPATABILITY: PASSES ISO 10993, PART 1.  
 MATERIALS: ALL MATERIALS ARE GAMMA RESISTANT, MEET USP CLASS VI; ARE DEHP FREE, AND NOT MADE WITH NATURAL RUBBER LATEX.  
 POTENTIAL STERILIZATION: ETO; AND GAMMA, BASED ON RAW MATERIAL SPECIFICATIONS.

QUALITY CRITERIA:

O.D. FLASH: 0.015 MAX. (0.4mm)

GATE VESTIGE: 0.01 MAX. (0.3mm)

EMBEDDED PARTICLES,BUBBLES,SPOTS,OR STAINS: 0.3mm<sup>2</sup>  
MAX. OR. NO MORE THAN 3 PER PART.

DRAWN BY		DMC	DATE		10/30/14	
APPROVED BY		PM	DATE			
MATERIAL		SEE NOTE				
FINISH		N/A				
UNLESS OTHERWISE SPECIFIED: DIMENSIONS ARE IN INCHES TOLERANCES: ANGULAR: ± 1° TWO PLACE DECIMAL ± .01 THREE PLACE DECIMAL ± .005		THIRD ANGLE PROJECTION				
		SIZE		DRAWING NO.		REV
		B		C2456240XX		E
		SCALE		SHEET		
		2:1		DO NOT SCALE DRAWING		1 OF 2

BILL OF MATERIAL:

1ST SUFFIX	2nd SUFFIX	LUER BODY	Y CONNECTOR	STEM
24	FT OR NONE	CLEAR POLYCARBONATE MAKROLON Rx 1805 451118	CLEAR POLYCARBONATE MAKROLON Rx 1805 451118	BLUE SILICONE 40 DUROMETER WACKER LR3003/40 DT COLOR, K75238
50	FT OR NONE	CLEAR EASTAR COPOLYESTER MN004	CLEAR EASTAR COPOLYESTER MN004	BLUE SILICONE 40 DUROMETER WACKER LR3003/40 DT COLOR, K75238